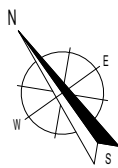






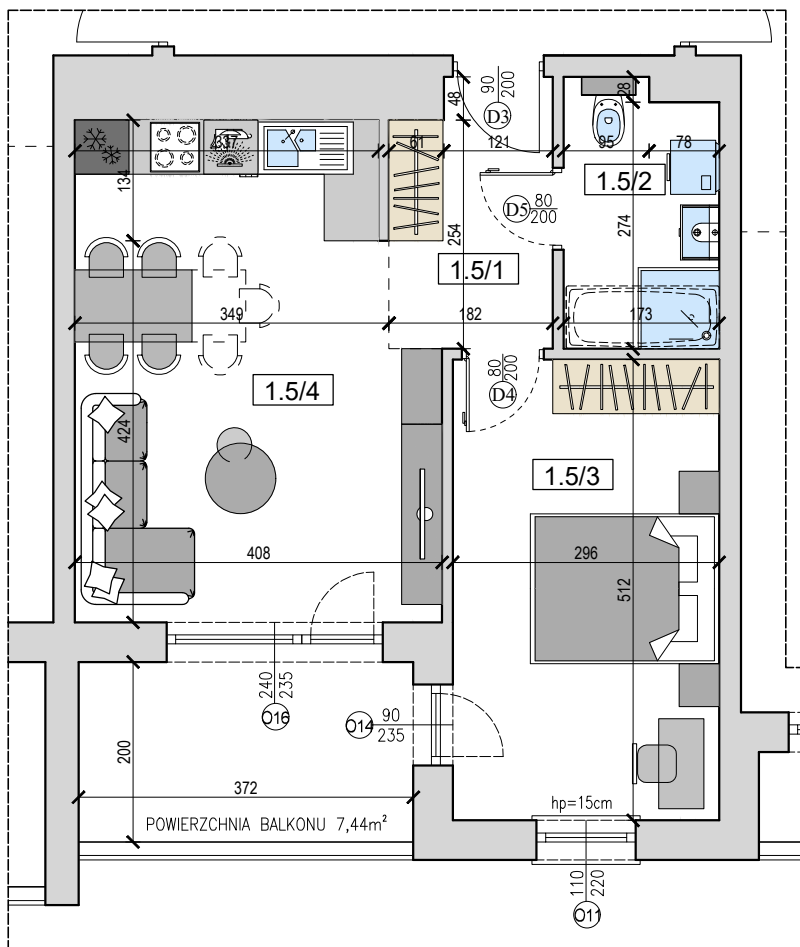


OSIEDLE JAGIELŁY

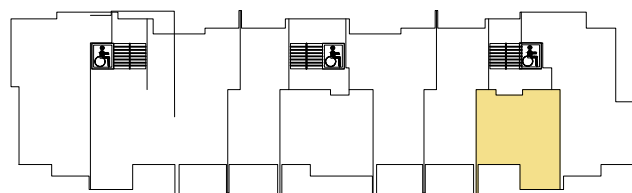


-  ETAP: III
-  MIESZKANIE NR: 5
-  PIĘTRO: PIĘTRO I
KONDYGNACJA NAZIEMNA: 2
-  LICZBA POKOI: 2
-  POWIERZCHNIA: 46,48 m²
-  POW. BALKONU: 7,44 m²

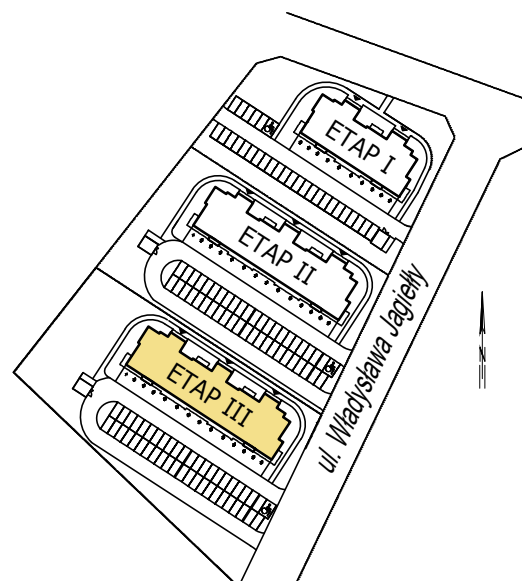


| LOKAL 5 | | |
|-----------------------|-----------------------------------|-------|
| 1.5/1 | PRZEDPOKÓJ | 5,2 |
| 1.5/2 | ŁAZIENKA | 5,01 |
| 1.5/3 | SYPIALNIA | 15,16 |
| 1.5/4 | POKÓJ DZIENNY Z ANEKSEM KUCHENNYM | 21,11 |
| POWIERZCHNIA LOKALU 5 | | 46,48 |

PIĘTRO I
SCHEMAT KONDYGNACJI



PLAN OSIEDLA



Biuro Sprzedaży

ul. Wł. Łokietka 6,
86-100 Świecie

APARTADO
DEVELOPMENT

+48 504 504 470

biuro@apartado.pl

www.apartado.pl